

A large, cylindrical, corrugated metal water tank is positioned on a wooden pallet. The tank is situated next to a yellow building with horizontal siding and a brown roof. A white picket fence is visible on the left, and a gravel path leads away from the building towards the right. The background features a line of trees and a clear sky.

KRM 7mm 055 7 mm Water Tank Kit

Instructions for Construction
By
Keiran Ryan

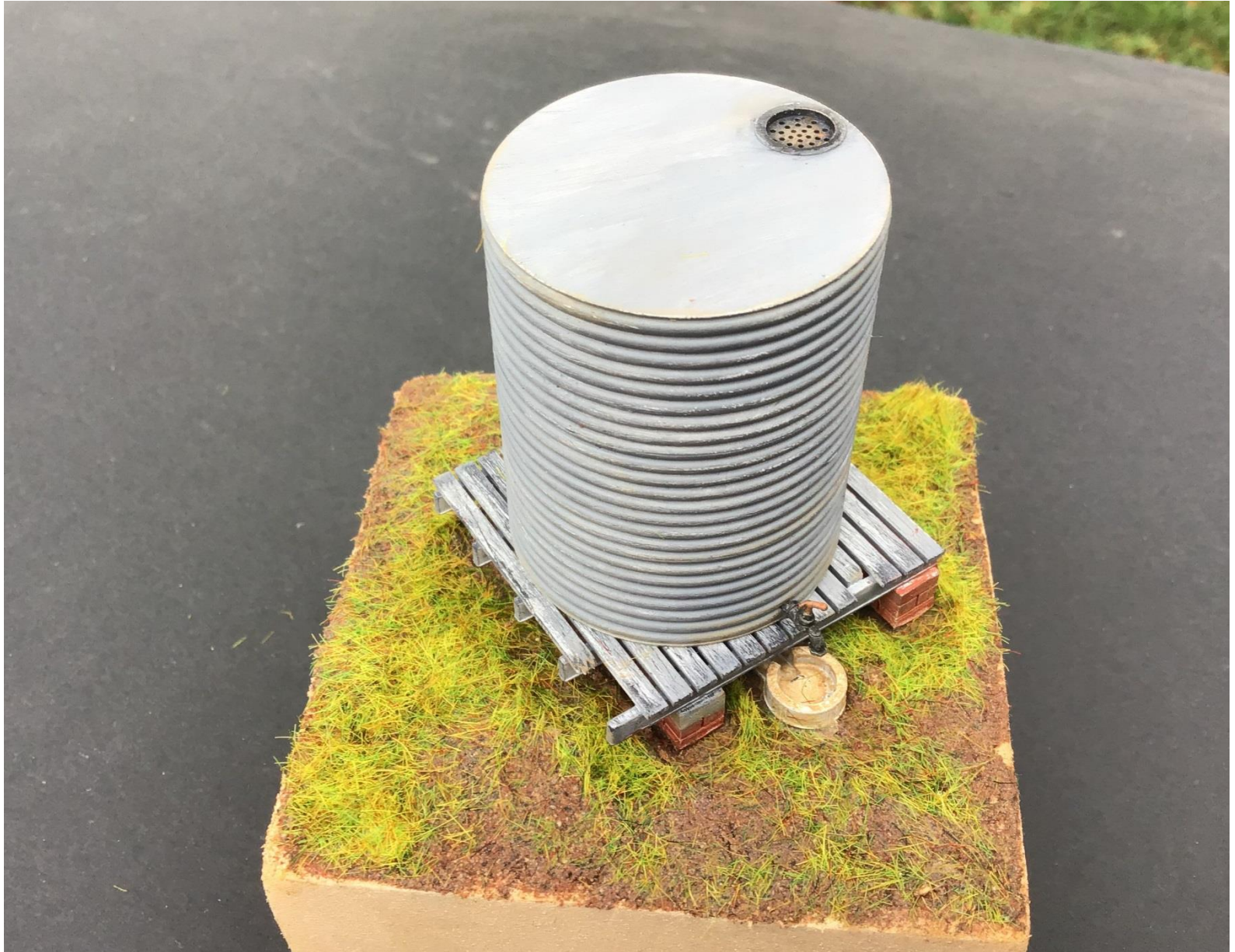
Introduction

- This kit of a NSWGR Station Water Tank and associated equipment. Is a multi-parts kit which is 3D printed in resin.
- The kit is a simple kit to construct.
- The kit needs to have certain holes opened up with a 1 mm drill (not supplied)
- A small amount of flashing needs to be removed with a cutting blade, file or sanding pad.
- The parts can be glued together with CCA (Supaglu).

What is Included in the Kit

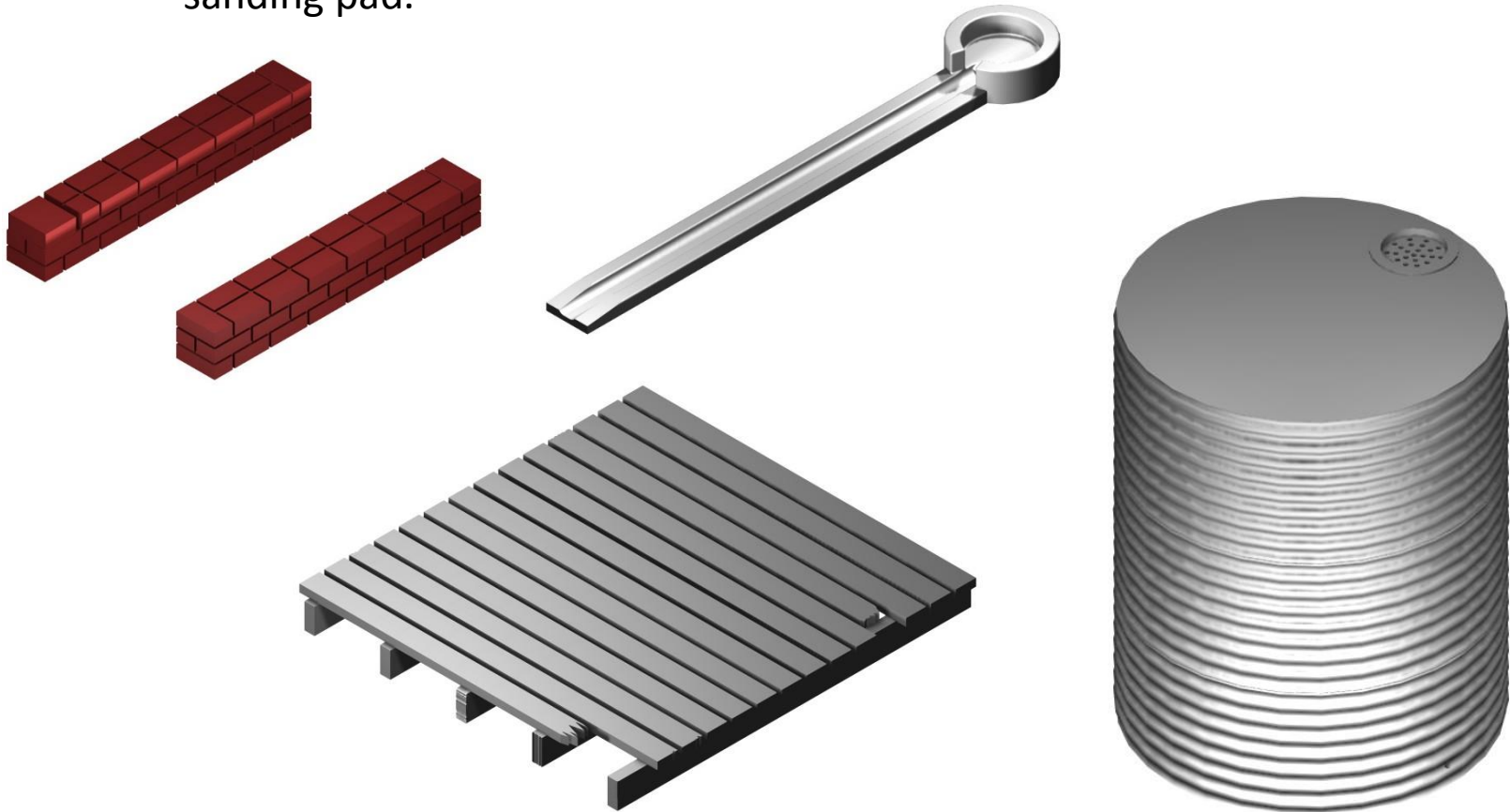
- Corrugated Water tank
- Water Tank Stand
- Water Tap
- Water Tank Stand
- 2 x Tank Supports (Brick)

Outcome



Parts

- Identify all parts.
- Before starting, give all parts a good but gentle wash with some soapy water to remove any residue, from the printing process.
- Remove any excess flash at the base of all the parts, using a file , scraper or sanding pad.



Putting it all together.

- ✓ Wash all the parts and completely dry them with compressed air if you have it.
- ✓ Remove all flashing at the base of all the parts, using a scraper, file or sanding pad.
- ✓ Drill the hole in the side of the tank to accommodate the tap.
- ✓ The Tank stand has been printed in a state of disrepair, so the damage to it is deliberate.
- ✓ It is best to paint all the parts before assembly. Use your imagination or reference material for your colour selection.
- ✓ Weather the model to your liking, when finished, seal the model with a light spray of IPA (Isopropyl Alcohol) and allow to dry before handling.
- ✓ And last but by no means least, have fun with the kit.

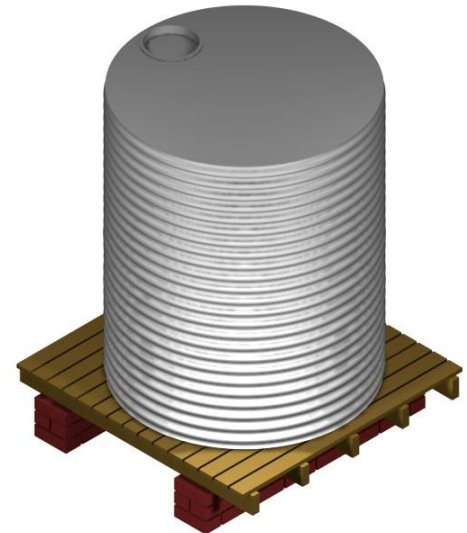
The Basic Construction.

- ✓ It is this simple.
- ✓ The Brick footings are placed into position. The footing with the different block at the front top left, is located at the front of the Tank Stand, 7mm from the front of the joists . The other footing is located to the absolute rear of the tank stand.
- ✓ The Drain is located between the Brick footings, so that the bowl id directly under the Tap.
- ✓ Place the tap into the Water tank, via the hole in the base of the tank..... **Warning** ----- do not turn the tap on, as water will leak everywhere, as the tank comes full. ----- ha, ha.
- ✓ You can glue the parts together once you are happy with the location of your Water Tank kit.
- ✓ I have included photos of the actual tank that the model was based on at Colo Vale NSW, on the Picton Mittagong loop Line. Feel free to use these as a reference for painting, if you wish.

Photos of the location.



More Photos



Conclusion.

Regards and Happy Modelling, Keiran Ryan

All feedback can be give to me via:
krmodels@gmail.com